

Ups-a-Daisy Cardigan

sizes sm, med & large preemie
(adjustments for larger sizes are in parenthesis)

materials:

approximate yardage - dk weight yarn --
MC: 150 yards (white)/C1: 40 yards (pink) /C2: 5 yards (yellow)

needles

3.75 mm (US 5) and 4.25 mm (US 6) circular needles (or size necessary to achieve gauge), plus one extra dpn or straight needle similarly sized

gauge: 24 st/ 36 r = 4"

two 3/4" buttons

all yarn requirements are approximate

abbreviations:

MC: main color	RS: right side
Cx: contrasting colors	sl x: slip x stitches, purlwise unless otherwise specified
incr: k into front and back of next st	ssk: slip 2 stitches, separately and knitwise, then knit together through the front loops
k: knit	st(s): stitch(es)
k2tog: knit 2 stitches together as one	WS: wrong side
LH: left hand	
p: purl	
RH: right hand	

designer's note: right front and left front are defined as if you were wearing the sweater.

instructions:

With C1 and larger needles, cast on 92(110/128) st. Do not join, sweater will be worked back and forth in stockinette (RS rows are knit, WS rows are purl)

- 1 10(12/12) rows: work across using C1
- 1 4 rows: *work 2 st with MC, 4 st with C1. repeat from * across. end by working 2 st with MC.
- 1 2 rows: work across using C1
- 1 work next 15 rows in stockinette, making color changes according to the chart. number of repeats -- size small: 5 times, size medium: 6 times, size large: 7 times
- 1 2 rows: work across using MC

split for armholes:

back and neck shaping

transfer two front sections (first and last 20/25/30 stitches) to holders or waste yarn, then join new yarn for the back. This section may be worked on straight needles, if desired. 44(52/60) st

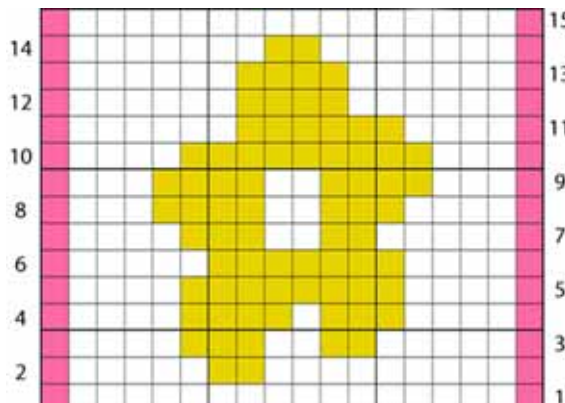
- 1 2 rows: work across using C1
- 1 4 rows: *work 2 st with MC, 4 st with C1. repeat from * across. end by working 2(4/0) st with MC.

repeat previous 2 steps until 4(5/6) squares have been completed, then work 2 C1 rows

back neck

place stitches on 3 holders as follows -- right edge, 12(14/16); center neck, 20(24/28); left edge, 12(14/16).

clip yarn, leaving a 24" tail.



Lion Brand Baby Soft
MC: bubblegum (pink), CC: white, C1: buttercup (yellow)
yarn used in picture:

photograph © 2006 Patti Pierce Stone, all rights reserved

right front and neck shaping

with RS facing, join yarn at center front. transfer 20(25/30) right front sts from holder to needle. place the 4 st between front and back onto waste yarn, to be worked with sleeve.

- 1 2 rows: work across using C1
 - 1 4 rows: *work 2 st with MC, 4 st with C1. repeat from * across. end by working 2(1/0) st with MC.
- repeat previous 2 steps until 3(4/5) squares have been completed.
- 1: cast off 6(8/10) st, k to end of round in established box pattern
 - 2: purl across in established box pattern
 - 3: cast off 2(3/4) st, k to end of round in established box pattern
 - 4: work 4 rows, continuing in established box pattern
- place remaining 12(14/16) st on a holder.

left front and neck shaping

with WS facing, join yarn at center front. transfer 20(25/30) right front sts from holder to needle. place the 4 st between front and back onto waste yarn, to be worked with sleeve.

- 1 2 rows: work across using C1
 - 1 4 rows: *work 2 st with MC, 4 st with C1. repeat from * across. end by working 2(1/0) st with MC.
- repeat previous 2 steps until 3(4/5) squares have been completed.
- 1: cast off 6(8/10) st, k to end of round in established box pattern
 - 2: purl across in established box pattern
 - 3: cast off 2(3/4) st, k to end of round in established box pattern
 - 4: work 4 rows, continuing in established box pattern
- place remaining 12(14/16) st on a holder.

TERMS OF USE ... This is a pattern for charity or personal use only -- neither it, nor items made from it, are to be sold!

You may provide a direct link to this pattern, but may not copy the contents to your web site or any other form of communication. Photocopies may be made and shared as long as the copyright notice and terms of use are visible. If you choose to make these for yourself or family, please also consider making a pair for charity! Not sure where to donate them ... check the charity links page at www.p2designs.com

joining shoulders:

with wrong sides of sweater facing outward, mount the 12 (14/16) back right shoulder stitches onto a needle. repeat for front shoulder st.

holding the needles with the front shoulder stitches and the back shoulder stitches parallel, use a spare needle and 3-needle bind off to join the two and bind off the stitches.

mount both front and back left shoulder stitches on needles and repeat.

back neck stitches will remain on hold until time to create the button band.

sleeves (worked in MC):

with smaller circular needles mount the left 2 st on hold at armhole. pick up 19(24/29) sts, approx 3 st for every 4 rows, around the armhole to the shoulder seam. pick up one st in the seam. pick up the same number of st on the other side of the armhole. end by mounting the right 2 st on hold at the bottom of armhole. 43(53/63) st

join and place marker to indicate beginning of round.

with larger needles, k around for 2 rounds

sleeve decreases:

1. k2, k2tog, k to last 4 st on rnd, ssk, k2.
2. 4 rounds: knit around.

work last 2 steps 6 times (12 st decreased, 31/41/51 st remain)

3. k2, k2tog, k to last 4 st on rnd, ssk, k2.
4. 2(3) rounds: knit around.

repeat steps 3 and 4 until 25(31/37 st) remain.

cuff:

- 1 3 rounds: work k1, p1 ribbing. end k1
- 1 knit around for 6(8/10) rounds.
- 1 bind off loosely using a purled decrease bind off.

repeat process for 2nd sleeve.

purled decrease bind off:

*p2tog. sl just worked st back to LH needle. repeat from * around until a single st remains. clip yarn, leaving a 6" tail, and pull through remaining st to tie off.

for knit decrease bind off, use k2tog instead of p2tog.

front band, buttonholes & finishing:

- 1 with right sides facing, use the smaller circular needle and C1 to pick up 3 st for every 4 rows from the bottom of the first box at the lower edge to the top of the top box at the neck edge. PM, k1 in the corner. continue picking up st to the shoulder seam.
- 1 pick up 1 st in the shoulder seam and one in the side of the next st on the back neck.
- 1 mount 20(24/28) back neck st onto a free needle, then knit across.
- 1 pick up 1 st in the side of the next st on the back neck and 1 st in the left shoulder seam.
- 1 pick up 3 st for every 4 rows from the shoulder to the top of the top box at the neck edge. PM, k1 in the corner. continue picking up st to the bottom of the last box at the lower edge.

the stitch count from shoulder to lower front should be the same for both right and left sides.

front band:

- 1: with WS facing and using larger needle, k to last st. sl1.
- 2: k to st before marker, incr, k1, incr. k to st before next marker, incr, k1, incr. k to last st. sl1.
- 3: k to last st. sl1.
- 4: k to st before marker, incr, k1, incr. k to st before next marker, incr, k1, incr. k to last st. sl1.
- 5: *buttonhole row:*
WS facing, k to 4 st after the 2nd marker. make a one-row buttonhole. k 3. make a one-row buttonhole. k to last st. sl1.
- 6: k to st before marker, incr, k1, incr. k to st before next marker, incr, k1, incr. k to last st. sl1.
- 7: bind off evenly using a knit decrease bind off.

one-row buttonhole for a 3/4" button:

1. slip one stitch knitwise. bring the yarn forward and drop it. slip the next stitch knitwise and pass the first slipped stitch over the second slipped stitch and off the needle.
2. leave the working yarn dropped and bind off 2 more stitches in this manner (3 total)
3. slip the last stitch on the right hand needle back to the left needle. turn.
4. bring the working yarn back to the front. using a purl-through-the-back-loop cast on, create 4 new stitches. turn.
5. slip the first stitch knitwise onto the working needle. slip the 2nd stitch over the first and off the needle. tug to tighten. slip the first st on the working needle back onto the LH needle.

one buttonhole completed.