

Plaited Baby Hat

adjustments for larger size in parenthesis

materials & gauge:

- ☺ dpns or circular needles – 3.25mm (us 3) or size necessary to achieve gauge
- ☺ Fingering weight yarn:
 preemie large: newborn:
 MC: 55 yards MC: 65 yards

gauge: 14 st/ 19 r = 2" in stockinette

all yarn requirements are approximate

techniques & abbreviations:

- k:** knit
- k2tog:** knit 2 stitches together as one
- k3tog:** knit 3 stitches together as one
- p:** purl
- rnd:** round
- s2kp:** slip 2 sts together and knitwise. knit next st. pass slipped st over new knit st and off of the needle.
- s2pp:** slip 2 sts together and knitwise. purl next st. pass slipped st over new purl st and off of the needle.
- ssk:** slip 2 stitches, separately and knitwise, then knit together through the front loops (a left-leaning decrease)
- sl:** slip
- st(s):** stitch(es)
- yo:** yarn over

inset stitch pattern:

(7 stitch, 4 row repeat - chart below)

- 1: p1, k2, yo, k1, ssk, p1.
- 2/4: p1, k5, p1.
- 3: p1, k2tog, k1, yo, k2, p1.

instructions:

with MC, cast on 62 (71). Join to form a circle. Be careful not to twist! to adjust, st count should be a multiple of 9 + 8.

ribbing (7 rnds):

- 1: [k2, p1] 6x. place a marker. p8. *k2, p1 to end of rnd.
- 2: k2, p1. repeat from * to marker. p8. *k2, p1 to end of rnd.
- 3: k2, p1. repeat from * to marker. k7, p1. *k2, p1 to end of rnd.
- 4: k2, p1. repeat from * to marker. work **inset stitch pattern rnd 1.** *k2, p1 to end of rnd.
- 5: k2, p1. repeat from * to marker. work **inset stitch pattern rnd 2.** *k2, p1 to end of rnd.
- 6: k2, p1. repeat from * to marker. work **inset stitch pattern rnd 3.** *k2, p1 to end of rnd.
- 7: k2, p1. repeat from * to marker. work **inset stitch pattern rnd 4.** *k2, p1 to end of rnd.

CROWN:

- ☺ k to marker. work **inset stitch pattern rnd 1.** k to end of rnd.
- work around in established pattern until hat measures 2 1/2" from ribbing, or desired height less 2" for decreases.
- ☺ End having worked an rnd 4 of the stitch pattern.

decreases:

- 1: k to marker. work **inset stitch pattern rnd 1.** k to end of rnd.
- 2: [k7, k2tog] 2x p1, k7, p1. *k2tog, k7, repeat from * to end of rnd. End k2tog. (64 sts)
- 3: k to marker. work **inset stitch pattern rnd 3.** k to end of rnd.
- 4: [k6, k2tog] 2x p1, k7, p1. *k2tog, k6, repeat from * to end of rnd. End k2tog. (57 sts)
- 5: k to marker. work **inset stitch pattern rnd 1.** k to end of rnd.
- 4: [k5, k2tog] 2x p1, k7, p1. *k2tog, k5, repeat from * to end of rnd. End k2tog. (50 sts)

- 5: k to marker. work **inset stitch pattern rnd 3.** k to end of rnd.
- 6: [k4, k2tog] 2x p1, k7, p1. *k2tog, k4, repeat from * to end of rnd. End k2tog. (43 sts)
- 7: k to marker. p1, k2tog, yo, k2tog, p1. *k to end of rnd. (38 sts)
- 8: [k3, k2tog] 2x p1, k5, p1. *k2tog, k3, repeat from * to end of rnd. End k2tog. (31 sts)
- 9: [k2, k2tog] 2x p1, s2kp, p1. *k2tog, k2, repeat from * to end of rnd. End k2tog. (22 sts)
- 10: [k1, k2tog] 2x s2kp. *k2tog, k1, repeat from * to end of rnd. End k2tog. (13 sts)

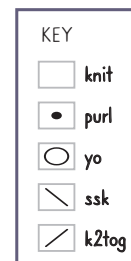
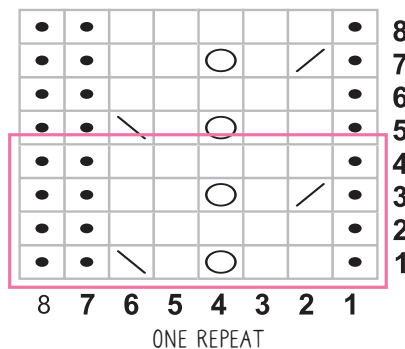
finishing:

- ☺ Cut 6" tail and thread through loops
- ☺ Pull tight, weave through inside to secure and clip ends.
- ☺ weave in ends at cast on edge.



yarn used in photo: Universal Yarn - Uptown Baby Sport (shell)

Plaited Inset Chart



TERMS OF USE ... This is a pattern for charity or personal use only – neither it, nor items made from it, are to be sold!

You may provide a direct link to this pattern, but may not copy the contents to your web site or any other form of communication. Photocopies may be made and shared as long as the copyright notice and terms of use are visible. If you choose to make these for yourself or family, please also consider making a pair for charity! Check the charity links page at www.p2designs.com for donation ideas.